

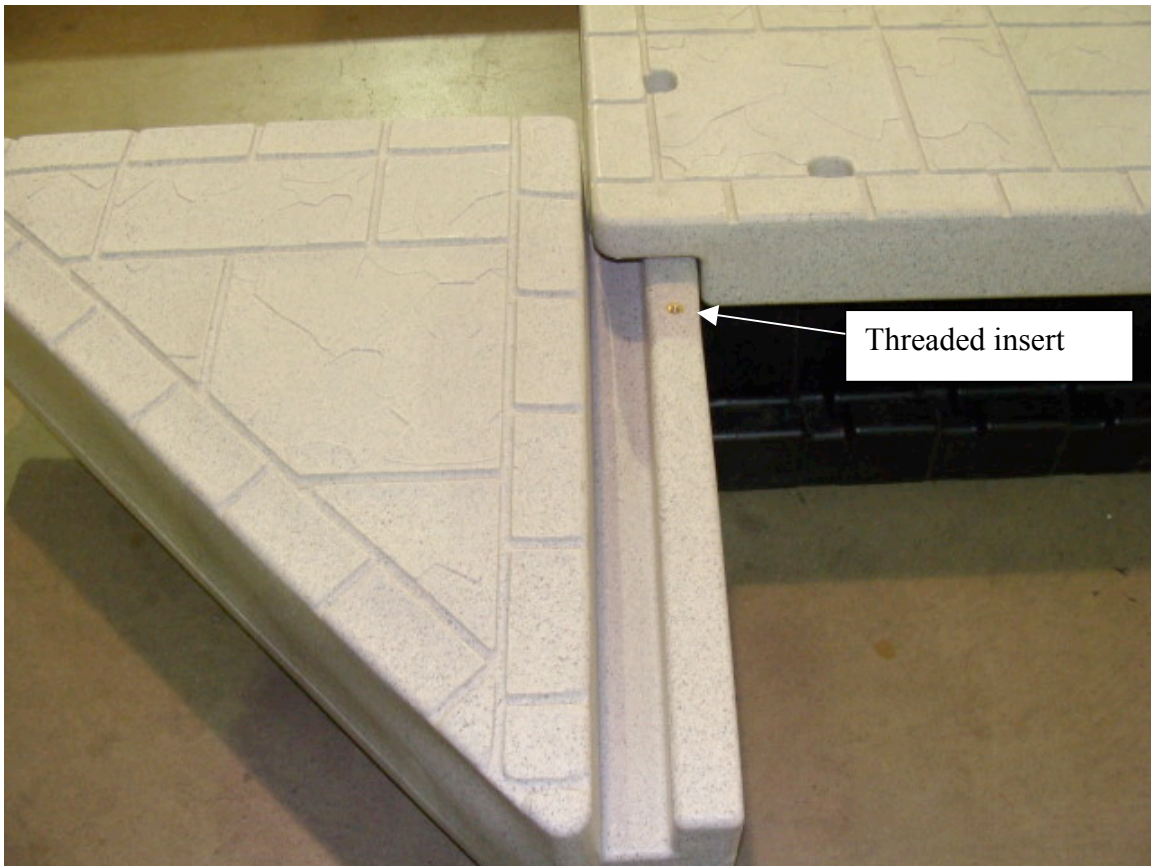


Item # | Product Name: #300051 Corner Deck Section (60")

Parts List:	Tools Needed:
1. Corner Deck Section (Gusset)	1. Silicone Spray (optional)
2. 3/8 x 1 1/2" Bolt and Washer	2.
3.	3.
4.	4.

Assembly Instructions:

1. Insert the Corner Gusset into the channel on the dock section by sliding it in from the end. Silicone spray may be used to help it slide easier down the channel.



2. Slide the corner gusset section down the H-channel until it butts up to the adjoining dock section. The threaded insert in the gusset should line up with the hole in the dock deck. Secure with the 3/8 x 1 1/2 bolt and washer. A simple L-shaped dock assembly is shown.

